

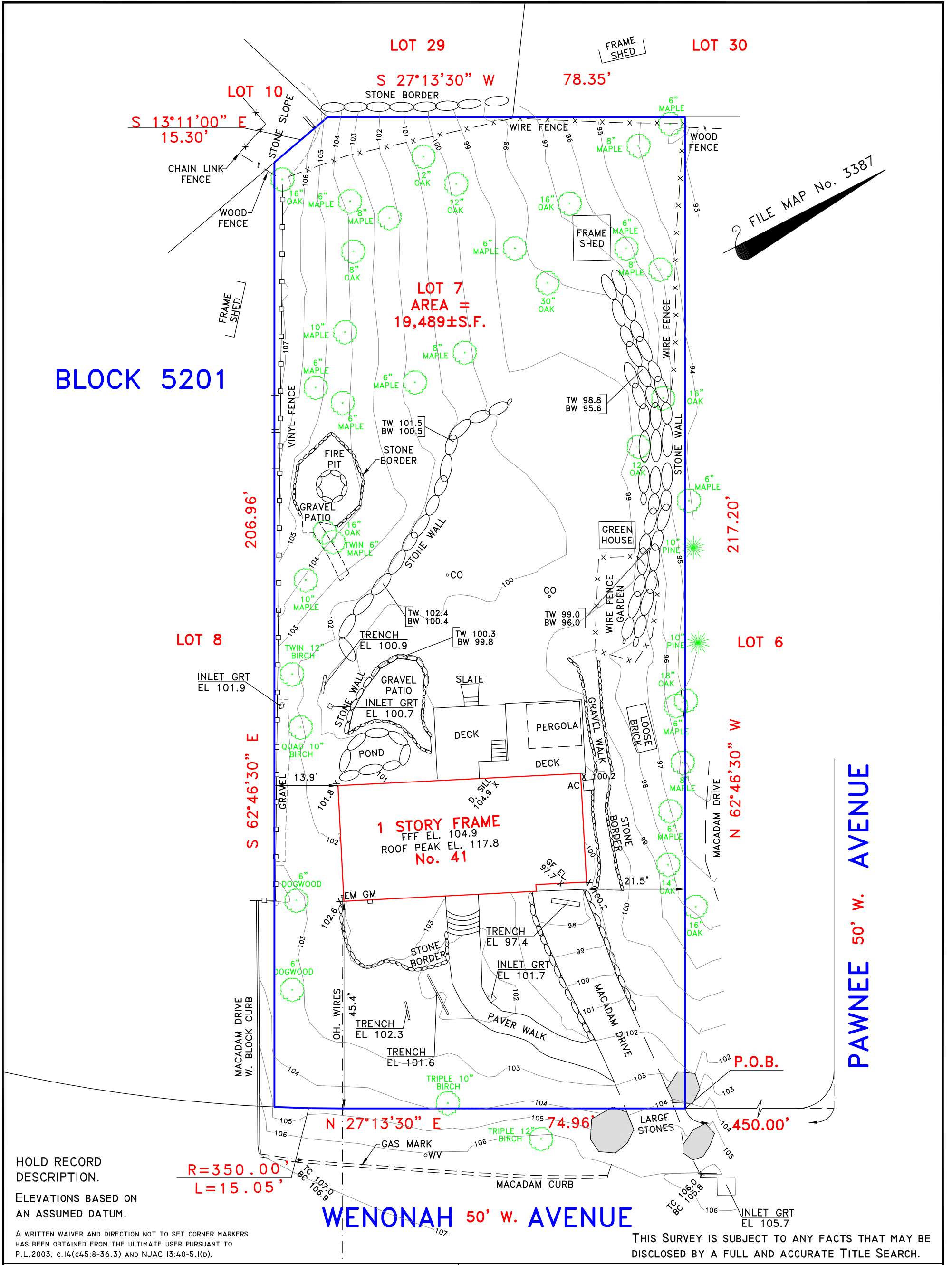
Lantelme, Kurens & Associates, PC

Engineers & Surveyors

101 West Street, Hillsdale, N.J. 07642

Ph. 201-666-2450

Fax 201-666-9745



FILE MAP No. 3387

HOLD RECORD DESCRIPTION.

ELEVATIONS BASED ON AN ASSUMED DATUM.

A WRITTEN WAIVER AND DIRECTION NOT TO SET CORNER MARKERS HAS BEEN OBTAINED FROM THE ULTIMATE USER PURSUANT TO P.L. 2003, c.14(C45:8-36.3) AND NJAC 13:40-5.1(d).

THIS SURVEY IS SUBJECT TO ANY FACTS THAT MAY BE DISCLOSED BY A FULL AND ACCURATE TITLE SEARCH.

TOPOGRAPHIC SURVEY

CERTIFIED TO: MARK WALSTEAD; SKRABLE ENGINEERING, LLC.

PROPERTY SITUATED IN: BOROUGH OF OAKLAND, BERGEN COUNTY, NEW JERSEY

LOT NO.: 7 (TAX MAP) 26A, 26B & 27B (FILE MAP)

BLOCK NO.: 5201 (TAX MAP) 3524 (FILE MAP)

MAP SOURCE: "RAMAPO MOUNTAIN LAKES, SECTION No. 3, SITUATED IN THE BOROUGH OF OAKLAND, BERGEN COUNTY, N.J." FILED IN THE BERGEN COUNTY CLERK'S OFFICE MAY 21, 1945 AS MAP No. 3387.

Christopher J. Lantelme, P.E. & L.S. 39580

SCALE: 1" = 20'

DATE: 03/24/25

PARTY: JN/VD

DRAWN BY: DR

NO. 4IWENONAH

LAND SURVEYOR